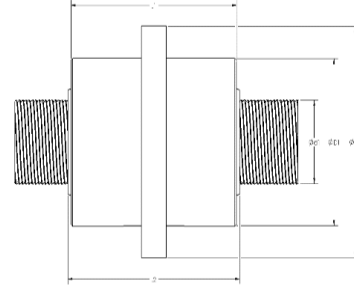


CMC High Performance Roller Screw

- d_1 = Shaft OD
- D_1 = Cylindrical nut OD
- D_2 = Nut flange OD
- L_1 = Nut length - no wipers
- L_2 = Nut length - with wipers



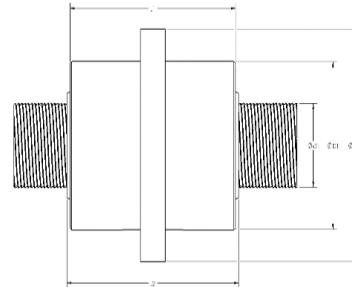
Diameter x Pitch	d1 (mm)	Efficiency	Single nut with backlash		D1 (mm)	D2 (mm)	L1 (mm)	L2 (mm)
			C (kN)	Co (kN)				
8x3	8.2	92.00%	8.9	18.2	21	41	31	41
8x5	8.4	92.70%	7.3	14.8	21	41	31	41
12x3	12.1	91.50%	28.2	58.1	30	48	44	54
12x5	12.3	92.20%	26	54.9	30	48	44	54
15x5	15.3	91.70%	35	73.8	34	56	50	60
15x10	15.5	91.30%	31.6	65.8	34	56	50	60
20x5	19.8	90.80%	63.8	134.7	42	64	55	65
20x10	20.1	92.70%	70.9	149.7	42	64	55	65
21x5	21.3	90.40%	71.3	150.5	45	68	54	64
21x10	21.6	92.60%	70.3	148.4	45	68	54	64
25x4	24.2	88.20%	118.3	249.8	53	84	78	88
25x5	24.3	89.70%	112.5	237.4	53	84	78	88
25x10	24.6	92.20%	108.6	229.3	53	84	78	88
30x5	30.3	88.20%	133.6	281.99	62	92	85	99
30x12	30.8	92.10%	130.8	278.1	62	92	85	99
30x20	31.2	92.70%	129.4	273.3	62	92	85	99
36x12	36.7	91.70%	122.3	258.2	74	106	80	92
39x5	39.3	86.10%	170.8	360.5	80	116	100	114
39x10	39.6	90.80%	160.9	339.7	80	116	100	114
39x12	39.7	91.40%	168	354.6	80	116	100	114
39x15	39.9	92.60%	170.1	358.2	80	116	100	114
48x5	48.3	84.50%	258.9	546.6	100	150	127	141
48x8	48.5	88.20%	237.8	501.9	100	150	127	141
48x10	48.6	89.70%	221	466.6	100	150	127	141
48x18	49.1	92.00%	267.8	565.3	100	150	127	141

NOTE: This is a sampling of sizes only. If you do not see the size you need on this table (continued on following page), contact CMC Sales Engineering for assistance.



CMC High Performance Roller Screw

- d_1 = Shaft OD
- D_1 = Cylindrical nut OD
- D_2 = Nut flange OD
- L_1 = Nut length - no wipers
- L_2 = Nut length - with wipers



Diameter x Pitch	d1 (mm)	Efficiency	Single nut with backlash		D1 (mm)	D2 (mm)	L1 (mm)	L2 (mm)
			C (kN)	Co (kN)				
48x24	49.4	92.70%	300.8	365.0	100	150	127	141
56x12	56.7	89.90%	458.4	967.7	122	162	166	180
56x30	57.5	92.70%	602.9	1,304.8	122	162	166	180
60x15	60.9	90.60%	448.7	947.3	122	162	166	180
60x20	61.2	91.70%	489.9	1,034.1	122	162	166	180
60x25	61.5	92.20%	523.1	1,104.3	122	162	166	180
60x30	61.8	92.70%	543.3	1,147.0	122	162	166	180
64x12	64.8	89.10%	388.2	830.5	115	180	129	147
64x18	64.9	91.10%	432.0	935.0	115	180	129	147
64x24	65.2	92.00%	468.7	1,014.5	115	180	129	147
75x10	75.6	86.40%	663.5	1,890.2	150	195	191	209
75x20	76.2	90.90%	754.7	1,948.1	150	195	191	209
75x40	77.4	92.70%	665.2	1,975.3	150	195	191	209
80x12	80.6	87.20%	644.8	1,395.5	138	180	156	174
80x18	80.9	90.10%	729.2	1,578.2	138	180	156	174
80x24	81.2	91.30%	772.9	1,672.7	138	180	156	174
80x36	81.8	92.40%	813.1	1,759.8	138	180	156	174
100x12	100.6	85.60%	1,130.2	4,222.2	200	245	260	281
100x20	100.2	89.50%	1,427.9	4,125.5	200	245	260	281
100x35	101.1	91.80%	1,377.2	4,360.1	200	245	260	281
100x50	102	92.70%	896.5	4,328.9	200	245	260	281
120x20	121.2	88.16%	1,604.0	6,258.5	240	295	330	355
120x35	121.2	89.81%	1,645.3	7,003.2	240	295	330	355
150x40	151.8	88.20%	2,191.6	9,499.8	320	385	412	437
150x50	151.8	89.50%	2,208.1	9,465.4	320	385	412	437

NOTE: This is a sampling of sizes only. If you do not see the size you need on this table (continued on previous page), contact CMC Sales Engineering for assistance.